

NOWA NOWA PHOTO PHOTO

PHOTOGRAPHIC WORKSHOP

The artists enclave of Nowa Nowa in the heart of East Gippsland is our base for a 2-Day/3-Night workshop that explores all things creative, artistic and expressive with the camera. The workshop is limited to just 10 people, is guided by Ewen Bell and Gary Yelen, and offers a chance to discover photography as art.

PHOTOGRAPHY
by Ewen Bell





PHOTOGRAPHY FOR ARTISTS

WHAT WE DO

The course runs for 2 full days, but getting to and from Nowa Nowa on the eastern coastline of Victoria (Australia) takes a little time on either side, so the result is a 4 day schedule. It all begins with your arrival in Nowa Nowa and a welcome dinner, then two full days of sessions, discussions, practice and questions. On the fourth and final day we have one more chance to welcome the sunrise with cameras in hand before driving home or catching the train to Melbourne.

There's even a few canoes by the lake if you want to chase the sunrise through the mist.

WHAT TO BRING

You'll need to bring your camera, preferably a Digital SLR. To make the most of our workshop you'll want the equivalent of a 50mm 'standard lens' and a 24mm 'wide-angle lens'. If you have wider than that then all the better. Remember though, partial frame Digital SLRs have a cropping factor when attaching a lens. If in doubt please email and ask. Compact digital cameras are also acceptable but we do like the SLRs and bigger bodied cameras!

If you have a laptop running MacOS or Windows then do bring it along as well. We'll be exploring some aspects of processing and managing digital files so you can get a little hands on with your own computer. The life-span of an image begins with a shutter but continues far beyond that moment.





SYLLABUS

Creative Control

Why use advanced modes of the camera?
Is photography a technical skill or a creative art form?
Who is taking the photo, you or the camera?

Composition

Structure of good composition and the Primary Subject
Using technical settings as tools for composition
Get closer, go slow, shoot wide
Having something to say, the story inside the frame
Iconic, Canonic and Laconic images

Expression

The camera as a brush
Painting with light
Stories within the frame
The camera looks both ways
Understanding before expressing

Technical Skills for Creative Control

How much technical control do you need?
How to setup your camera for creative control
The absolute basics of SLR manual control

Look for the Light

Studio versus the real world
Letting available light guide you
What the camera sees
Learning to see the light yourself
Tripods and Landscape Photography

Life after the Shutter

Practical considerations of digital files
Digital asset management
Fine tuning your images
How much time to spend in Photoshop?

RAW versus JPG

Who should be using RAW files
How to get the most out of a RAW file
RAW processing workflow examples
Dynamic Range in detail
Digital Asset Management /Metadata





DAY BY DAY

Day 1

Arrival in Nowa Nowa

6pm: Dinner and welcome to our guests

9pm: Session on Creative Control

Day 2

8am: Breakfast

9am session: Painting with light

10am session: Smoke and Mirrors

12pm: Lunch

2pm session: Chasing the Air

4pm: session: Still Life

7pm: Dinner

Day 3

7am session: Bush Walk

9am: Breakfast

10am session: Processing with RAW

12pm: Lunch

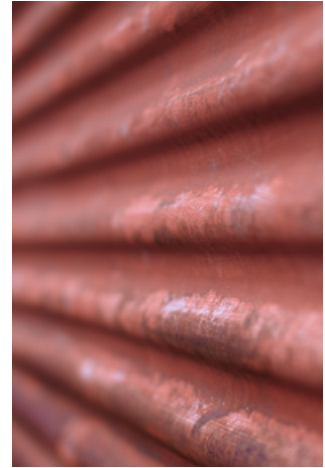
2pm session: Life after the shutter

4pm: session: Stories from the Caravan Park

7pm: Dinner and farewell drinks

Day 4

Breakfast, checkout and wander home





EXPRESSION

The heart of this workshop is discovering how to give your photography a voice. A picture tells a thousand words so long as the photographer has something to say and the means with which to say it. The camera is like a paint brush, it can only reveal what the artist wishes it to reveal. Composition and creativity are difficult lessons for the technical photographer, so we have enlisted the help of resident artist Gary Yelen.





BEYOND THE CAMERA

This workshop aims to avoid the detailed technical and formulaic style of photography, and encourages participants to seek their own expression and harness the camera to that end. If you are an experienced photographer and can't break out of your patterns then you'll be in good company. If you're a novice with a camera and care more for composition than calculations then please come and join us.



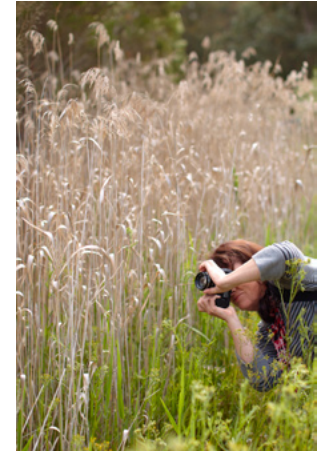


THE PHOTOGRAPHER

Ewen Bell is a professional travel journalist with regular features published in Australia and internationally. He has been operating unique photographic tours in Asia and Australia for 5 years, and through his practice of teaching and discovery Ewen developed his inspirational book titled “Photography for Travellers”. The website of the same name offers a constantly updated digest of location guides, practical philosophies and travel inspiration.

For the past few years Ewen has been working with tourism boards across Australia to bring a fresh perspective to their photographic libraries. There are over 5,000 images of his work in Australia distributed to travel media across the world, plus hundreds more in overseas libraries. You can see Ewen’s photography in publications such as Australian Geographic Outdoors, Vacations & Travel, Skywards, The Age, The Sydney Morning Herald, OutThere, Holidays for Couples and Backpacker Essentials.

Ewen was also chosen by the ASTW as their 2007 Australian Travel Photographer of the Year, and in 2008 won the award for Best Australian Image. In 2009 Ewen won two awards in the M.I.L.K. Competition and his work can be seen in the book called “Friendship, Family, Love & Laughter.”





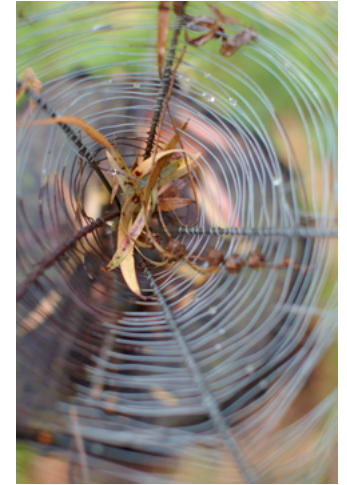
THE ARTIST

Gary Yelen has been making art all his life. Leaving home as a teenager to travel the world, he studied sculpture in Israel under the tutelage of Robbie Shcarf and fell in love with the landscape - and the life.

Then, on to Ireland where he built his family a gallery on the Ring of Kerry. Gary continued to sculpt and paint, and the gallery became known for its vibrant works in watercolours, pastels, oils and sculpture.

Gary returned to Australia in '95 and chose Nowa Nowa to establish his new gallery studio. Here he continues to produce his unique work in all mediums.

A true artist who brings curves and colour to everything he touches Gary is chatty, fun and passionate. And he'll probably change the way you see everything.





WHY NOWA NOWA

If you're asking this question then you've never been to Nowa Nowa. When I first discovered this town I didn't want to leave. It has a very small population that is out-numbered by visitors most weekends. Hidden on a distant arm of Lake Tyers the town is best known as a stopping point along the East Gippsland Rail Trail, and for its regular artistic events organised by locals. Nowa Nowa Nudes has been an ongoing feature of the arts calendar in Gippsland and vestiges of previous years nudes can still be seen around town.

Best of all Nowa Nowa is home to the studio at Jumping Fish Place, a space dedicated to art and filled with inspiration and comfort thanks Gary Yelen and his wife Andrea Lane. Gary's paintings are on display at the studio, and there's accommodation tucked into the hillside overlooking the waters of Lake Tyers. The location is charming, the people are inviting and the wilderness of Gippsland is all around us.



IO



IN MY OWN WORDS

Five hours drive from Melbourne is the town of Nowa Nowa, and to many people it's possibly not even a town. Less than 200 people live here and yet the community is well known for its artistic expression.

Every few years they hold the Nowa Nowa Nudes (an art competition dedicated to exposing free expression), they have an ongoing art installation house filled with contemporary concepts and recently launched the The Hole Truth where a piece of Nowa Nowa outdoors has been landscaped with interactive installations of artful mini-golf.

Nowa Nowa was home to my first photographic workshop,

and no it won't be my last. I'm invigorated and inspired for the next one and only wish it could come around sooner. February 2011 will no doubt come around soon enough. The date for May 2011 coincides with the Creative Gippsland festival, and the following date for late October 2011 will be tied into the Nowa Nowa Nudes for next year.

I'm always banging on about trying to use the camera as a creative device, not a documentary tool, and this workshop was an intensive two-day tackle to immerse ourselves in creation. I treat the camera like a paintbrush, so it made sense to bring in the expertise and inspiration of local artists Gary Yelen for the workshop.

Gary isn't restricted to paint of course, and his tendency to get outside the box is exactly what us photographers can learn something from. Like myself Gary is not formally trained, and perhaps our lack of structure is what has allowed us to build our own paths through the world of creative expression.

One of the key elements that I enjoyed from this experience was the artists retreat at Jumping Fish Place, the creative home of Gary Yelen. He's got a unique character of being unconventional yet entirely practical, and his influence on the studios and cabins at Jumping Fish Place is palpable. This is a space that gives full permission to be creative, to ignore conventions and find a few rules of your own. Or maybe just break somebody else's?

The location is rather remote, and that's something of a bonus. Jumping Fish Place is found 3kms down the end of a dirt track, overlooking the tannin waters of Lake Tyers

with the sounds of Kookaburras and Kurrajongs filling the morning air. Wallabies and wombats can be spotted at dusk, grazing the open grass around the studios and cabins. We don't do wildlife photography for this workshop, but being surrounded by the Australian bush adds an element of isolation to the experience. We have retreated to the bush to explore our expression, with a camera in hand and an open mind in mind.

Even the food was a highlight for me, catered by local resident who turns cooking into an art-form as well. I described the food as honest, which maybe lacks enough description for the flavour and flare of the cuisine. Suffice to say we ate well, nourishing the body as we nourish the mind and soul.

The workshops are two intense days of hands-on photography and impassioned discussion, with a welcome feast the day before the workshops start and a farewell breakfast once it's all over. It takes four days and three nights to complete the two-day workshop. The registration fee includes accommodation and all meals, you just have to get yourself to Jumping Fish Place.

- Ewen Bell

The Photographer for Nowa Nowa Photo Photo



About Ewen Bell
<http://ewenbell.com>

About Gary Yelen
<http://www.yelens.com.au>

About Nowa Nowa
<http://www.nowanowa.com>

About "Photography for Travellers"
<http://photographyfortravellers.com>

12