

Swedish Lapland and Lights

Ian Rolfe & Ewen Bell

Photo Tour 2019

Join us for 14 days of winter photography in Swedish Lapland. Charming ski cottages and dramatic tented camps will be your home amongst the frozen lakes and snow dusted forests along the edge of the Arctic circle. Snow mobiles and cinnamon scrolls are included.

February 27 - March 12, 2019
Maximum group size of 8
AU\$12,880pp



PHOTOGRAPHY
by Ewen Bell

Ian Rolfe
PHOTOGRAPHY



The Itinerary

Days 1-4 / Björkliden

Our tour begins at Kiruna Airport (KRN) where we meet the group from a Stockholm flight and then head west along Lake Torne to the skiing village of Björkliden. We have some cabins here that overlook the lake and the “Laponnian Gates”. We have four nights dedicated to shooting the Aurora, with great locations on offer for photography a short walk up the hill or even right on the balcony of your cabin.

One night is dedicated to visiting the Sky Station at Abisko, riding the chairlift high above the lake and dining beneath the stars while we await the auroral activity. We will also get familiar with snow mobiles during the day and visit some beautiful landscape locations when the sun is glistening off the snow.

Day 5 / Kiruna

We follow the iron roads to the town of Kiruna, famous for the impressive Ice Hotel. We make a day visit to explore and photograph the cool colours inside, and then head for a warm cabin and sumptuous dinner. On our way out of Kiruna the next day we also make a stop at the gorgeous wooden church.

Days 6-7 / Stora Sjöfallet

The next two nights are in a very remote part of Sweden, inside the Stora Sjöfallet National Park. This hidden piece of Lapponia offers some dramatic mountains and clear skies, inspiring us for auroras at night and frozen landscapes during the day. Reindeer herders have worked this land for thousands of years, and still do today.

Days 8-9 / Jokkmokk

Jokkmokk is the centre of Sapmi culture in Sweden, where language and crafts are taught to the next generation. We will enjoy the cultural exploration of local Sapmi people and have plenty of time to explore the museum and the seasonal cream filled buns known as Semla. We have a favourite place for aurora chasing in the event of a good forecast too.

Days 10-11 / Aurora Safari camp

This will be the most adventurous part of the journey, spending two nights at the tented camp with hot chocolate and a burning fire to keep warm. Nothing is quite like stepping out of a snow covered tent and seeing the stars high above with the colours of the aurora swirling above. The Aurora Safari Camp is located on the edge of a frozen lake with wonderful access to open skies for aurora chasing at night. Dog sleighs and snow shoes are another feature of our time here, plus we meet a reindeer herd on our way to the camp.

Days 12-13 / Luleå

Our adventure continues across the snow and ice as we head through the landscape to our seaside cabins, winding through forests and over rivers on the snow mobiles. There are some amazing stops along the way to shoot, and on the second day we take the snowmobiles out to the edge of the pack-ice to photograph the ever changing formations. Our final nights here will offer easy access to clear skies for aurora photography again.

Day 14: Departure

We will be able to get you back to Luleå Airport (LLA) in time for the midday flight to Stockholm, or we can drop you in town if you want to extend your time in Swedish Lapland.









Post Capture

Both Ian and Ewen like to emphasize the art of photography that takes place in the digital darkroom.

Every day of this Masterclass will allow for opportunities to discuss, refine and learn about post-processing techniques.

Do bring your laptop and your preferred processing software. A photo is never finished at the moment of the shutter, and as you learn different ways to process your images you can also adjust your technical approach to the camera accordingly.



Weather Wise

Swedish Lapland in winter is a seriously cold environment with intense amounts of snow and ice. From the beginning of February the conditions are the coldest and there is every likelihood of more snow arriving during our tour.

There will be days of amazing sunshine as well. The snow days are warmer, usually around -5C, while the clear days see temperatures drop to -20C or even less. The light on these clear days is unbelievable, enchanting and glorious. The sun stays low over the horizon for the entire day, giving a wonderful angle to the landscapes and very soft contrast. The hues shift from yellow to pink to blue during the day.

Please understand that you may well experience more cloudy days than sunny during this trip. We have extra time in key locations in order to increase our chances of getting the best light for the best photography. There will be quiet days however when the sun is not with us, but the experience is truly special regardless :)









Art and Creativity

The camera is like a paintbrush, and in the hands of different people it will produce very different images.

Ewen Bell specialises in teaching people about the creative potential of photography, to go beyond the technical issues of a camera and start taking creative control. Expression is at the heart of great photography, sharing your perspective, your view, your experience.

Combining with Ewen's creative outlook is Ian Rolfe and his decades of experience in Landscape Photography. Two unique and powerful aspects are brought together to provide a once in a lifetime adventure for photographers in search of something out of the ordinary.



Cameras are cool

We hear a lot of fuss about taking cameras into the Arctic conditions and how to prepare for the freezing temperatures. If you're shooting with a modern DSLR camera then you need no special equipment, modifications or protection.

On a recent journey in a colder region of the Arctic we spent hours with our gear shooting the Northern Lights in -32 temperatures. No problems. Your camera will go colder than that and still keep shooting. Your batteries won't last quite as long as when warm, but it's no drama. Really.

Heading outside at night to shoot the aurora does require that you take care of yourself, and ensure you keep your feet and fingers warm. A good tripod is essential and a conventional cable release is very handy.

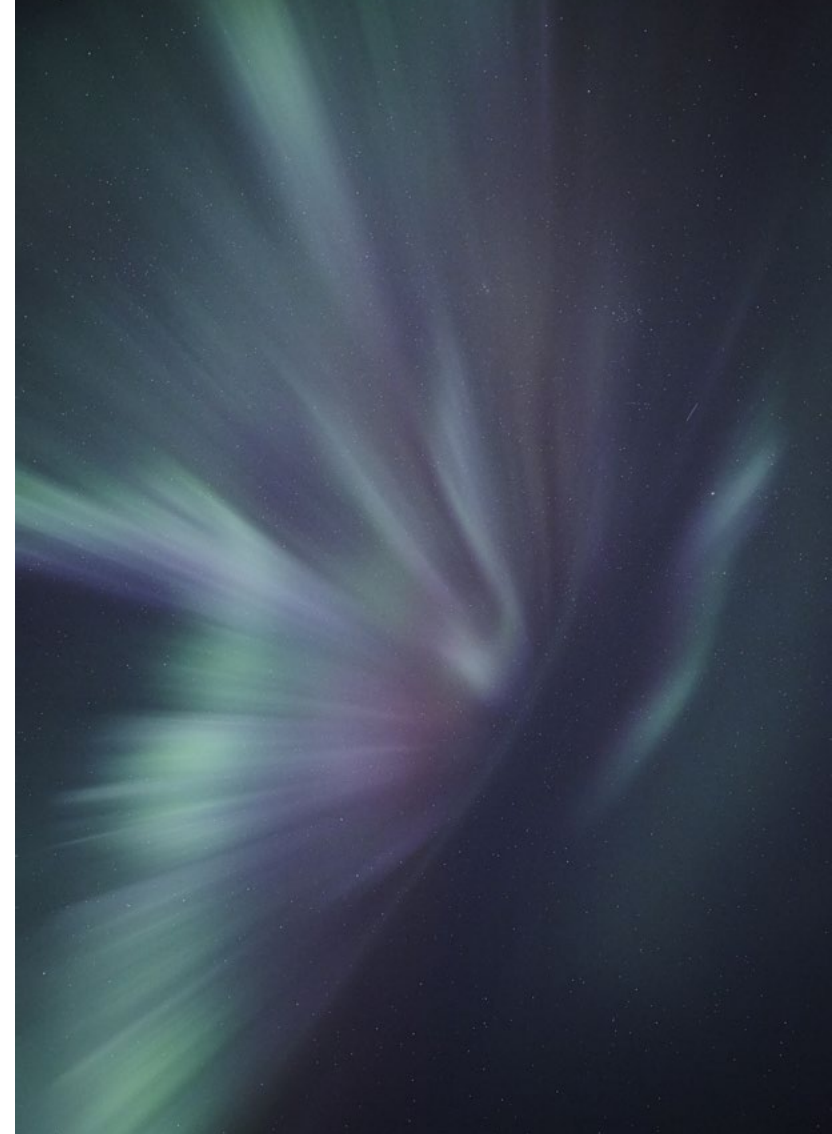


Northern Lights

This tour is an ideal opportunity to chase the Aurora Borealis, the Northern Lights. The tour is designed to take full advantage of clear skies at night, with immediate inspiration at our accommodation to head outside if conditions look promising.

There are no guarantees with Aurora activity however. You need high solar activity as well as clear skies to get a light show, although even a low grade intensity Aurora is something spectacular to see and photograph.

We will have dedicated sessions to plan for the Northern Lights and explain how to photograph them. A sturdy tripod is required for best results and a remote shutter cable is recommended. Time-Lapse and Star-Trail techniques can also be covered for those who wish to learn more during this trip.













Escort / Ewen Bell

Travel photographer and journalist, Ewen has been shooting in the Flinders Ranges for over 25 years. His photography of the landscapes and people in the region has been published internationally, most recently featuring in China and Australia's own RM Williams publications. Ewen's work also appears in photographic magazines, National Geographic Traveller, Food & Travel UK, Vacation & Travel, and many other outlets.

Ewen describes photography as a lifestyle, and enjoys sharing his love of the art with a select few travellers every year. Ewen is always happy to share his knowledge on photographic matters of technical, creative and career inspiration. His website "Photography for Travellers" is dedicated to offering advice on practical approaches to changing your creative perspective.

"Swedish Lapland is unlike anything else I've photographed, the people are generous and the landscape is immense. When the sun comes out the light is soft and angled, it fills turns the white into glittering diamonds. All the colours are there."

www.ewenbell.com

www.photographyfortravellers.com



Escort / Ian Rolfe

Professional Photographer Ian Rolfe specializes in landscapes and fine art imagery. His passionate approach to what light does to the landscape are clearly evident in the imagery produced. He has travelled extensively throughout the world, with the Himalaya's, United Kingdom, the Arctic Regions of Scandinavia, North America and New Zealand being some of his favourite places to photograph.

Ian has written and published three book and countless articles, with media outlets and institutions worldwide such as the National Library of Australia, The British Museum, The BBC, The ABC, SBS, Qantas, Australia Post, French Geographic, Microsoft, Victorian Government, Lonely Planet, Time magazine, and Flight Centre having used or purchased his images.

His Photographs have won numerous Gold, Silver and Bronze medals at Photographic Exhibitions Internationally. Ian is an associate member of the AIPP, a Grand Master of the Australian Photographic Society, has been awarded the distinction "Artiste" from the International Society of Photographic art, and has also been awarded a medal for special services to the Victorian Association of Photographic societies and he currently serves as President of the Victorian Association of Photographic Societies.

www.ianrolfelightsapes.com
www.ianrolfephotography.net











Dress for the Cold

This is not an expedition to the North Pole, you will not freeze to death when visiting the Arctic in Scandinavia. There's always a warm cabin and a hot cup of chocolate just around the corner too, but the experience of winter in Swedish Lapland is truly magical for the snow and ice.

We will supply you with a list of suitable gear to help you through the worst of Arctic winter conditions. You can gather your essential items before leaving home for this tour, or spend a few days in Stockholm to acclimate and shop for the best of Swedish winter clothes.

Snow Pants and Boots:

A pair of padded over-pants will add a layer of warmth as allow you to kneel down or fall over in the snow, in comfort. Big chunky snow boots are also essential, ones that are a size too big so your feet have lots of extra air to keep you warm.

Thermals & Gloves:

A layer of thermals will keep a warm core close to your skin on the coldest of nights. A decent pair of wind-resistant gloves with lots of puffy padding will also allow your hands to stay comfortable.

Puffy Jacket:

A big puffy jacket will give you a big layer of warm air on the cold nights of aurora photography, plus keep the wind off your lower layers.

“There is no bad weather, only bad clothing.”



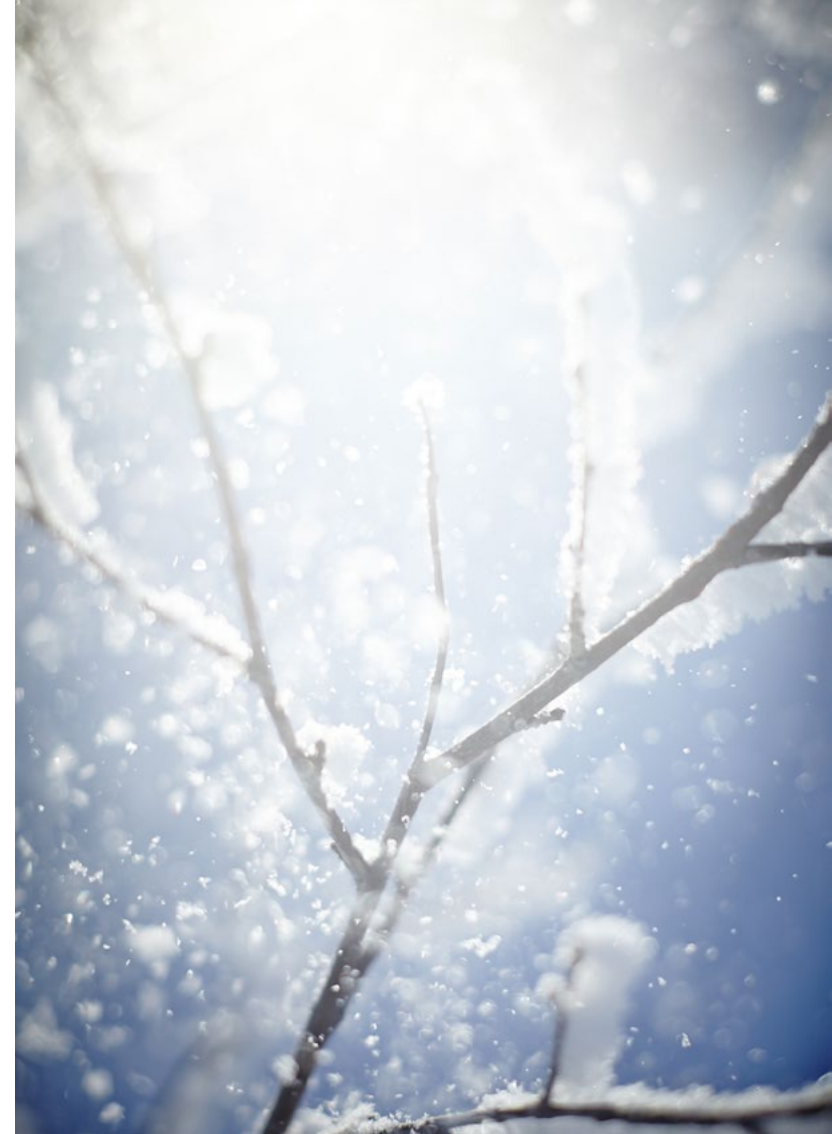
Learn and Explore

Anyone who loves photography can join this tour.

Skills and experience is not a prerequisite. Enthusiasm is essential. There is ample one on one time so that your questions can be answered, your photos can be reviewed and your expression can be encouraged. With such a small group size we can ensure everybody gets the encouragement and guidance they desire.

If you're a confident photographer or already work at a professional level, then this journey will simply assist with getting great shots. We encourage everyone on tour to share ideas, to discuss their experiences and learn from each other as well.

Partners are also welcome on these photo tours, but they may need to exercise a little patience with the desires of photographers to make the most of special moments. These photography adventures put the photographers first :)



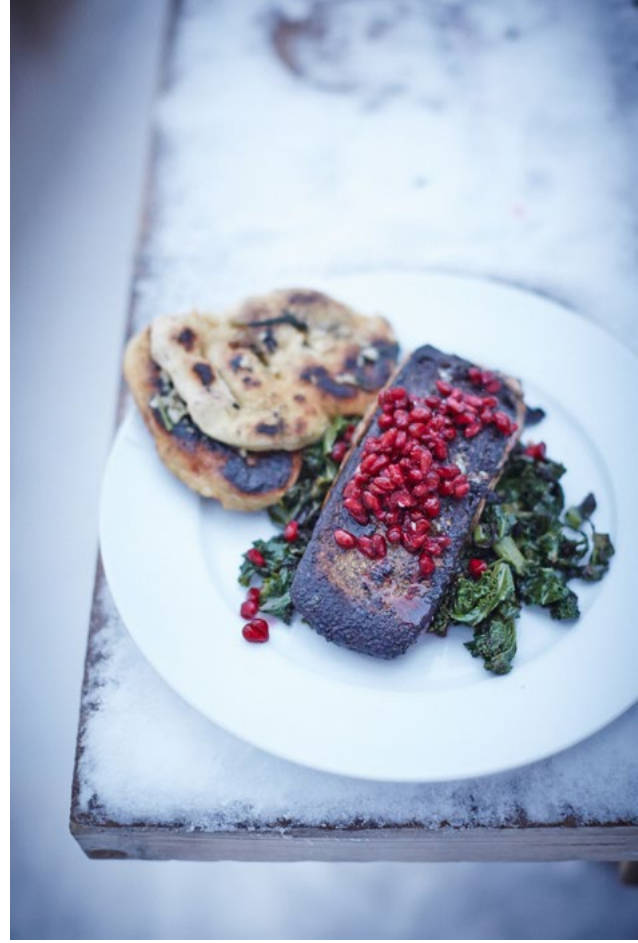




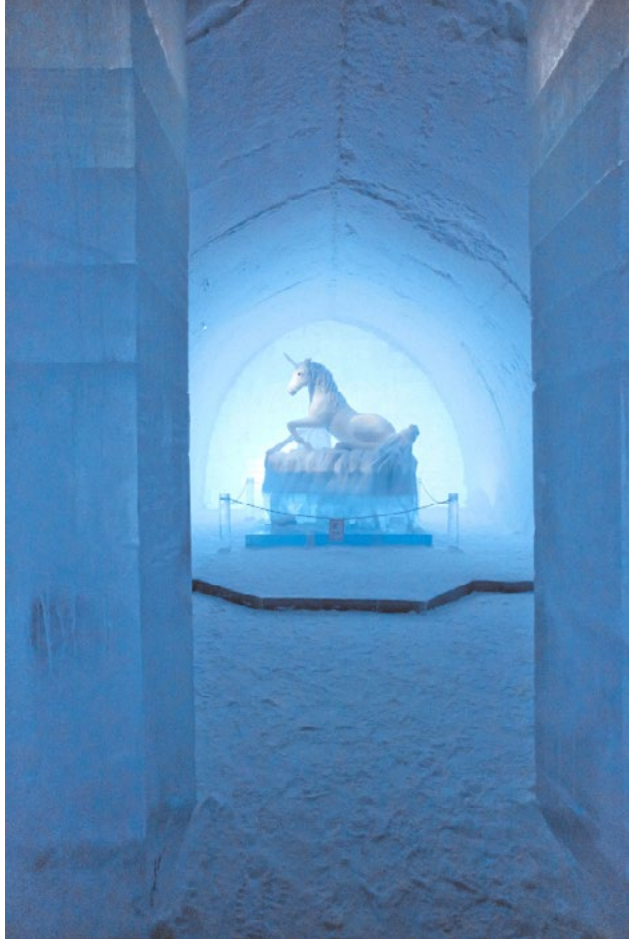












The Fine Print

Dates

February 27 - March 12, 2019
Starting in Kiruna and ending in Luleå

Price

\$12,880 AUD

Group Size

This tour is limited to 8 participants

The itinerary information may vary a little for your specific departure, as we continuously research and develop each trip. Inclement weather or other factors outside our control may also necessitate minor alterations.

Inclusions

- All meals are included and will be delicious
- All transportation by van, dogs and snow mobile
- Airport transfers at Luleå and Kiruna
- Expert tuition from Ian and Ewen
- Snow mobile hire is included in the tour cost
- Special emphasis on chasing the Aurora Borealis
- Endless inspiration from the scenery of Sweden

Exclusions

- Your camera gear
- Drinks and alcohol
- Flights into and out of Luleå/Kiruna
- Items of a personal nature

Accommodation Standard

The price is based on accommodation in cabins, hotels and tented safari camp. They are essentially the nicest accommodation available in each location, and are always toasty and warm.

Rooming

The default rooming for this tour will be single rooms with the exception of the Aurora Safari Camp. These are necessarily shared arrangements due to the limited accommodation on offer. Where we use cabins for overnight stays you can expect a single room but usually will not have a private ensuite.



Make Your Booking

Maximum of 8 places

How to Book

All bookings for this tour will be handled by Ewen Bell and payments to be made in Australian Dollars, just follow the link below and click on the “how to book” link.

A deposit of \$2,800 is required to confirm your place on the tour, and we require that all travellers take out travel insurance to cover any unforeseen changes or cancellations.

ewenbell.com/lapland

