

Photography Workshop

Ewen Bell
Ian Rolfe
Fredrik Broman

PHOTOGRAPHY
by Ewen Bell

Ultimate Kenya Safari

15 day adventure into the wild. Join two professional photographers in private land cruisers to explore the wilderness and culture of Kenya. Incredible value and a once in a lifetime journey.

Oct 6-20 2018
Maximum group size of 9
USD \$11,880pp



2018 Itinerary

Oct 6 Nairobi

We begin our journey by meeting up at the Amber Hotel, just outside the centre of Nairobi. There are nearby shopping malls if you need to pickup anything last minute, and any excess luggage can be left at the hotel until we return at the end of the journey. Airport transfers on arrival to Nairobi are included and we recommend Kenya Airways or KLM who operate out of the newest and most comfortable terminal for arrivals and departures.

Oct 7-8 Ol Pejeta Conservancy

We drive north towards mount Kenya that will come up on our right. Our base will be Sweetwaters Serena Camp, clustered around a waterhole in Ol Pejeta Conservancy, and here we find an amazing amount of wildlife. Both black and white rhino and the special gray's zebra for example. At Ol Pejeta there is also a very unique chimpanzee sanctuary, connected with the Jane Goodall Institute. The variety of bushland and savannah landscape, over Mt Kenya and a lot of game offer us an intense start of our photo tour in Kenya.

Oct 9 Aberdare Range

On our way down into the Great Rift Valley we first elevate up a bit into the Aberdare Range. Here we meet rainforest and mountain landscapes. The range has an average elevation of 3500 meters and the summit is 3999 meters. Our home for the night of the 14th is the Ark, surrounded by forest and bushland, but just next to a waterhole also with ground level photo opportunities.

Oct 10-11 Lake Naivasha

We leave the higher altitudes and drive down into the Great Rift Valley. A huge structure that divides the horn of Africa from the rest of the continent, and growing slowly by 2cm per year. Lake Naivasha is a great stopover for a few days, especially when we cruise the lake in the mornings for birds and hippos. We also head for Hells Gate National Park we meet dramatic landscapes, chase the Kilspringers, and take a dip in a thermoheated pool. We stay on the shores of Lake Naivasha with landscape photo opportunities and wildlife right outside the lodge and get a chance to shoot the last light over the water.





Oct 12-13 Maji Moto

Two nights off the grid on the edge of the Maasai plains. We stay with a Maasai family to learn about the life of warriors and explore the bird life. This is an opportunity to capture striking portraits, get close up with Weaver Birds and experience the peace and quiet of the landscape. We will go down a little bit in comfort but definitely upwards in adventure factor. There is no power and only have drop toilets, but there are hot showers and cold drinks. You will need to be careful with battery power and have a few spare batteries for your camera. This does limit our ability to process photos at night. We make up for the basic comforts when we reach the Maasai Mara.”

Oct 14-18 Maasai Mara

Now we head for the wide open savannah of the Maasai Mara and stay in two wonderful lodges. We'll be inside the park for pre-dawn light every morning and ready to photograph the animals as the sun comes up. The Maasai Mara is very open and the action takes place within small moments in between long drives. There are no certainties that you'll see a leopard, or cheetah or even the lions but we will make our best efforts possible.

We're not just going to see the animals, we want to get a chance to photograph them. That means we're chasing the light just as much as chasing the big five. So we avoid the middle of the day and drive in the golden hours. Our guides know the park better than you know your own home. They know where to look for a particular family of lions, which hippo pool is currently in favour and which river bends the Wilderbeast use to cross the river. They are not merely drivers, they are wildlife guides and they are seriously good at their job.

We will make arrangements for an optional balloon ride over the Maasai Mara as well.

Oct 19 Nairobi

We catch our private plane out of the Maasai Mara to make the journey to Nairobi a lot quicker and a little more scenic. It's a private aircraft chartered just for us so you won't have to worry about checkin limits or how heavy your camera bag is. If you have excess luggage from travelling before or after the Kenya trip, you can leave it at our Nairobi hotel to be reunited at the end. The evening in Nairobi will be our last night together and a chance to repack before catching our flights to new adventures.

Oct 20 Departure

Checkout from hotel in the morning will be 11am. We will have a private airport transfer arranged for each of your flights.

1

Inclusions

Everything is covered including meals and park fees.

3

Wild Life

Magnificent locations for a classic Kenyan safari.

5

Culture

Meet the tribes folk who call Kenya home.

2

Luxury

Tented camps and lodges plus private land cruisers.

4

Education

Two weeks of dedicated help from two professionals.

6

Comfort

Maximum of 4 guests per 4wd.







Dik Dik



Waterbuck



Grevy's zebra



White Rhino



Invitation to Beginners

Everybody is on their own journey and we love helping people explore new horizons in photography. We take time to assist everyone on a tour with their specific needs, to talk about what they want to learn. Sometimes that means how to take advantage of different modes on the camera, sometimes it's a discussion about how to advance your career in photography.

No two people are the same. That's why we keep these trips limited to just 8 people, so we can enjoy their company and spend time helping everybody along with their particular journey.

You don't need to be an expert to come on this tour. We will help you with suggestions on what to bring to make the most of the opportunities. We're here to help.



Getting Closer

It's a mantra of Ewen's that if you want a better photo then you need to get closer to your subject.

This is not always easy when shooting wildlife, but we're going to do our best to make it happen. All the wildlife and cultural photos you see in this brochure were taken by Ewen on lenses no longer than 400mm. There comes a point where a longer lens doesn't really give you a better photo, and for this safari experience we want to help you take your best possible photos.

Private land cruisers are a key part of how we achieve that, complete with roof hatches so you can stand up with telephoto lenses and have a clear line of sight on wildlife action as it unfolds.

We have three Land Cruisers (Troop Carrier style) for 9 passengers. On safari drives Fredrik, Ewen and Ian will ride up front to aid with spotting, and in the back there will be a maximum of 3 travellers per vehicle. Each vehicle is designed to carry 8 people or more in the rear, so there will be lots of room for everyone and minimal "elbow issues" when the action breaks out.

Most importantly, our drivers are extremely skilled in getting the small but agile vehicles into excellent positions for us to photograph. We call them drivers, but we understate their abilities as such. They are wilderness guides of the first order. On Ewen's previous trip to Kenya to shoot a magazine story he concluded, "A good driver is more important than a good photographer."



Lovely Lenses

Yes a good quality telephoto lens will be essential on this trip, but please make sure you have a good wide angle for scenery and a portrait lens for meeting tribes people. A 24-70mm f/2,8 will cover most of the non-wildlife photography.

For shooting wildlife the 100-400mm range is very handy, with the help of a 1.4x extender to push it a little further. Longer telephoto lengths may not be as useful as a faster autofocus performance. **Nothing in this brochure was shot with anything longer than a 70-200mm lens plus 1.4x extender.**

Here are some of our favourite telephoto lenses if you're planning to shop before the tour:

Canon 100-400 f/4.5-5.6 L IS II

- the best autofocus we've seen in a telephoto zoom lens

Nikon 70-200mm f/2.8 VR II

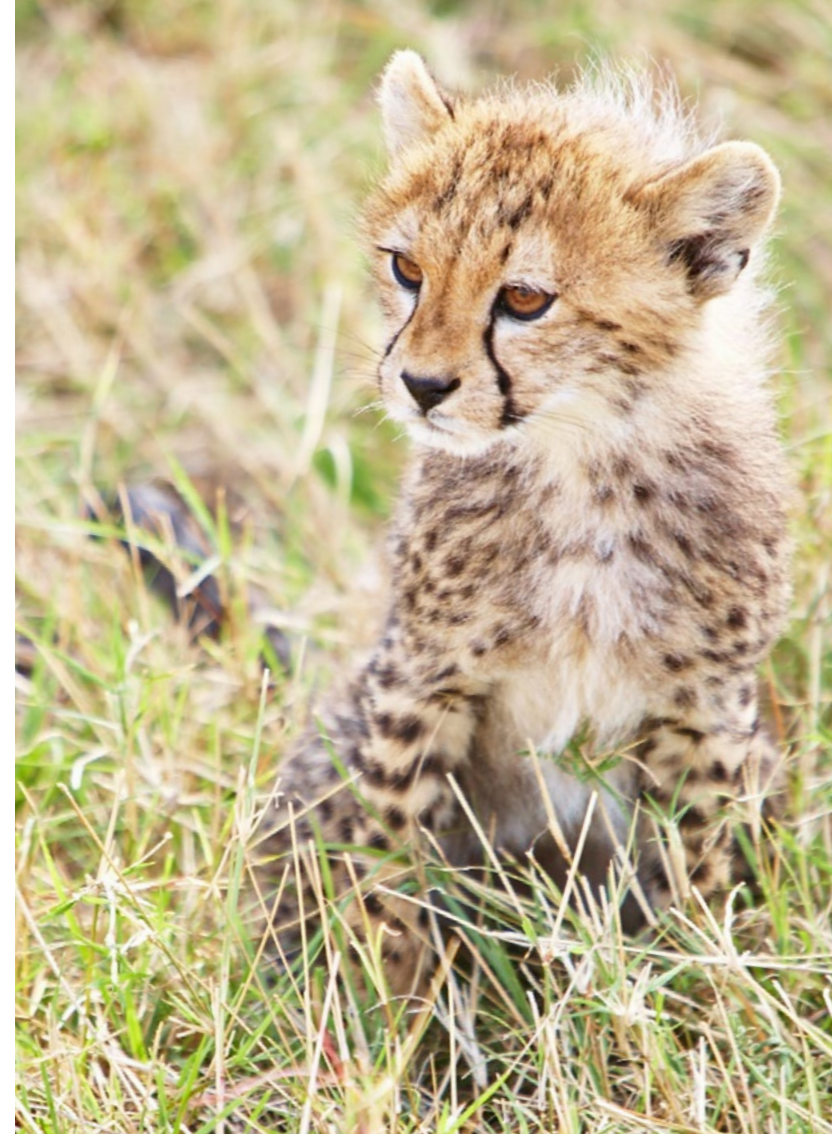
- We will often be close enough to shoot at 200mm, or add a 2x converter for more reach

Sigma 150-600mm f/5-6.3 DG OS HSM Sports

- sports model is quite heavy but has a good autofocus and sturdy construction

Sigma 150-500mm f/5-6.3 DG OS HSM

- very light lens for budget wildlife photography and reasonably sharp





White Rhino



Elephants



Vervet Monkey





Grant's Gazelle





What You See

What you see in this brochure is exactly what you get on the tour. No surprises.

All images here were taken by Ewen Bell during recent visits to the exact same locations that are included in the itinerary. Images were shot on his Canon 5D and mostly with a 70-200mm f/2.8 lens.

Every photo in this brochure is a photo that you can achieve, and we will do our best to help you experience the same photographic joy.



Where We Stay

This is not a backpacking bus rambling across Africa with pasta and tomato sauce for dinner every night. It's a little bit of luxury, a lot of wilderness and the occasional tented camp to give us the best access to wildlife along the way.

We have thrown in a few really luxurious stops along the way, but mostly we use well established lodges and tented camps to ensure that you are comfortable and well rested in between safaris.

The itinerary is designed for wonderful wild life opportunities, and coupled with superb accommodation hand picked by Fredrik.



Image Processing

Ewen likes to emphasize how much of the art of photography takes place in the digital darkroom.

Every day of this adventure will allow for opportunities to discuss, refine and learn about post-capture processing techniques.

Do bring your laptop and your preferred processing software. A photo is never finished at the moment of the shutter, and as you learn different ways to process your images you can also adjust your technical approach to the camera accordingly.









Maasai Tribes

Local Guide Fredrik Broman

Fredrik Broman has cultivated his local knowledge of Kenya since 1998 when he worked on the photography and writing for an educational book about the Savannah and the Maasai Culture. Fredrik lived in Kenya full time for 3 years and, after moving his base camp back to the Arctic Circle, has continued to return to Africa every year.

Fredrik has been increasingly involved in tourism development with the Maasai people, and local entrepreneurs. Fredrik started to run safaris with other international photographers, commissioned shoots for tourism developers and also of course his annual private trip to explore new safari experiences with his family.

Aside from his experience in Africa, Fredrik is internationally recognised for his work in the Arctic as an editorial photographer as well as innovating new Arctic safari experiences. He once brought guests from the Maasai tribes to experience the Arctic winter as a unique cultural exchange.

aurorasafaricamp.com



Photographic Guide Ian Rolfe

Professional Photographer Ian Rolfe specializes in landscapes and fine art imagery. His passionate approach to what light does to the landscape are clearly evident in the imagery produced. He has travelled extensively throughout the world, with the Himalaya's, United Kingdom, the Arctic Regions of Scandinavia, North America and New Zealand being some of his favourite places to photograph.

Ian has written and published three book and countless articles, with media outlets and institutions worldwide such as the National Library of Australia, The British Museum, The BBC, The ABC, SBS, Qantas, Australia Post, French Geographic, Microsoft, Victorian Government, Lonely Planet, Time magazine, and Flight Centre having used or purchased his images.

His Photographs have won numerous Gold, Silver and Bronze medals at Photographic Exhibitions Internationally. Ian is an associate member of the AIPP, a Grand Master of the Australian Photographic Society, has been awarded the distinction "Artiste" from the International Society of Photographic art, and has also been awarded a medal for special services to the Victorian Association of Photographic societies and he currently serves as President of the Victorian Association of Photographic Societies.

www.ianrolfelightsapes.com
www.ianrolfephotography.net



Photographic Guide Ewen Bell

As you can see Ewen is a fan of the big cats, and the little ones too. Travel photographer and journalist, Ewen's work appears in photographic magazines, National Geographic Traveller, Lonely Planet Traveller, Food & Travel UK, Vacation & Travel, and many other outlets.

Ewen describes photography as a lifestyle, and enjoys sharing his love of the art with a select few travellers every year. Ewen is always happy to share his knowledge on photographic matters of technical, creative and career inspiration. His website "Photography for Travellers" is dedicated to offering advice on practical approaches to changing your creative perspective.

"It's been ten years since I photographed in Africa and I'm excited to be going back. I wanted to make this journey with someone special, someone I trust. Fredrik is amazing and his experience in Kenya is unparalleled. It'll be nice to be chasing leopards and lions instead of penguins or polar bears."

www.ewenbell.com
www.photographyfortravellers.com



Cultural Connections

Most people will travel to Kenya only once in a lifetime, so we want them to go home having had the most significant and rewarding experiences possible.

There's more to Kenya than the Big Five. We love the wildlife but on this tour we also want to devote a little time to meet the people who enrich the culture of Kenya so deeply. To begin with we have our safari drivers. Schooled hard and long by the Kenya Wildlife Authorities they are incredibly knowledgeable on the natural reserves, national parks, animals, flora and more. They are our heroes.

Their wisdom extends beyond the wildlife and into logistics. These are the guys you want to have on hand to navigate around impassable dirt roads, hack through fallen trees on the track or simply avoid the worst of Nairobi traffic in the downtown. You will love our guys for their generous spirit and capable leadership.

Next we meet the Samburu people, relatives with the Maasai, that we will have intense meetings with in the Mara. Deeply proud tribesmen and women of Nilotic origins, they possess a very close connection with nature and all the small, but important, things that allow their people to survive and develop in what are often harsh conditions.

From the very beginning when Fredrik and Ewen began designing this experience for photographers, they decided it was critical that travellers have a meaningful opportunity to engage and understand the people of the landscape, not just the wildlife. The itinerary you see here is the result of that plan.







The Migration



Elephants





The Fine Print

Dates

Oct 6-20, 2018

Price

USD \$11,880

Group Size

This tour is limited to 9 participants

Inclusions

- All meals are included and will be delicious
- All ground transportation
- Park permits and guide fees
- Expert tuition from Ewen & Fredrik
- Private plane out of Maasai Mara to Nairobi

Exclusions

- Your camera gear
- Drinks and alcohol
- Flights into and out of Kenya
- Items of a personal nature
- Airport transfers for International Flights

Accommodation Standard

The price is based on twin share accommodation in lodges and tented camps. Campsites on this tour are extremely comfortable and have private bathrooms for each tent.

Twin Share

The default rooming for this tour will be twin share, but you can pay a supplement of \$1290 to upgrade to a single room or private tent.

The itinerary information may vary for your specific departure, as we continuously research and develop each trip. Inclement weather or other factors outside our control may also necessitate alterations. Our intention is always to give you the very best experience.



Make Your Booking

Maximum of 8 places

How to Book

All bookings for this tour will be handled by your photographic leader Ewen Bell. Visit his website here to register for the trip and arrange your non-refundable deposit of US\$2,000.

Once your deposit has been received your place is confirmed.

ewenbell.com/kenya